

22 April 2019

Plan Holders
RSU 18
China Middle School Addition and Renovations

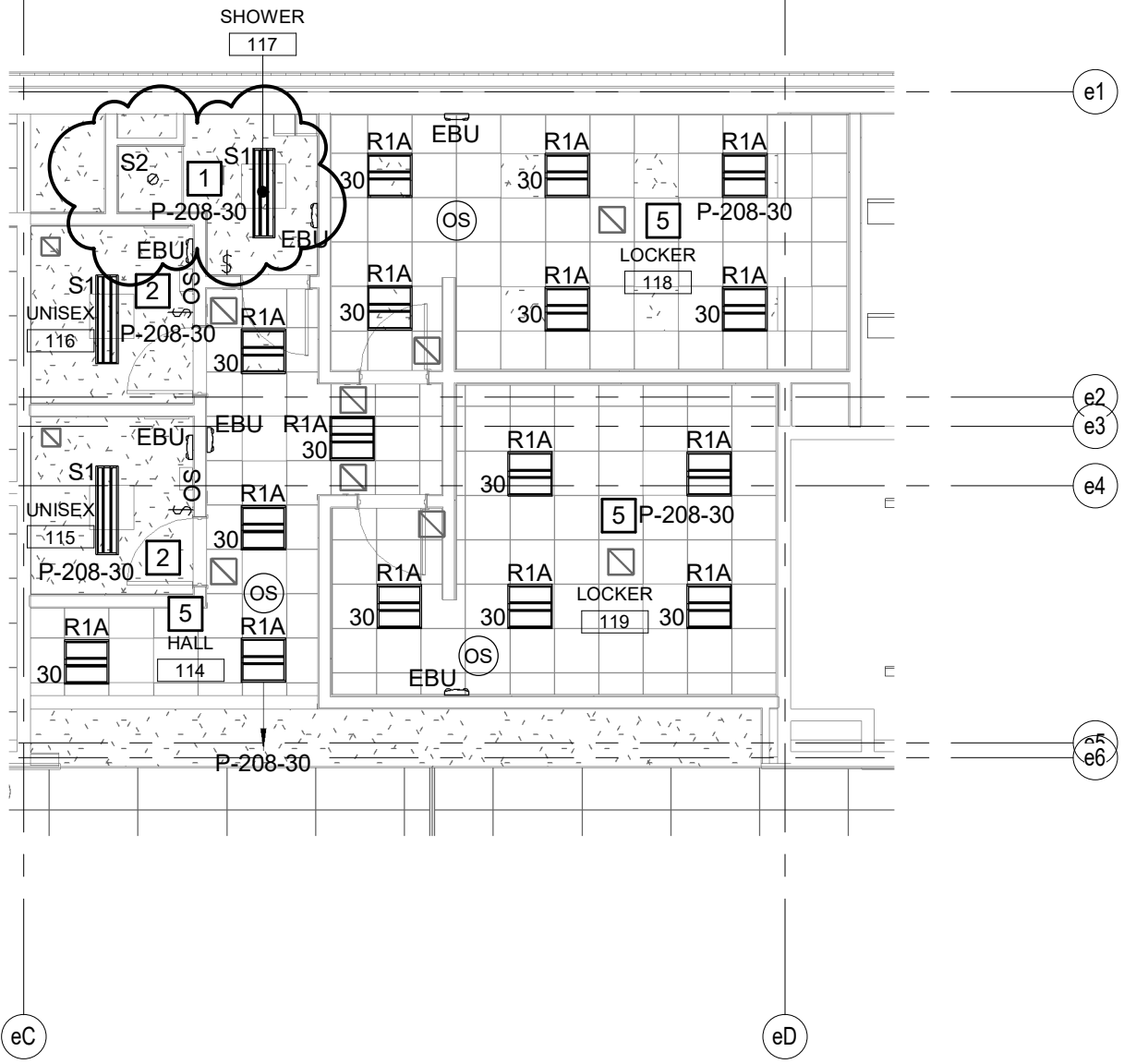
RE: Addendum 1

Dear Plan Holders:

1. Project Schedule: Change the date of substantial completion to 7 October 2019. Change the date of final completion to 14 October 2019. Delete Alternate C: Modification of Contract Time
2. Changes to electrical drawings: Refer to Sketch SKE-01 and SKE-02, attached.
3. Changes to electrical specifications: Section 261000 – Basic Electrical Requirements: **DELETE** Paragraph 1.4, B in its entirety. **ADD** in its place Paragraph 1.4, B as follows: “B. Provide a 208/120-volt, 3-phase, 4-wire secondary service to the building. Primary service will be brought to utility-owned pole-mounted transformers by the utility. Utility construction charges for the service herein specified shall be paid by the Owner. Coordinate the work of this section with the Owner and the Utility.

Sincerely,

Mike Sealander, AIA
Maine Licensed Architect



SHOWER 117 - CHANGES TO SHEET EL-100

CHINA MIDDLE SCHOOL GYM ADDITION

Scale: 1/8" = 1'-0"

Project No: 19006

Date: 04/22/19

CAD File:

SKE-01
 ADDENDUM A

Allied Engineering
 Structural Mechanical Electrical Commissioning

160 Veranda Street
 Portland, Maine 04103
 T: 207.221.2260
 F: 207.221.2266
 Web: www.allied-eng.com

LUMINAIRE SCHEDULE

TYPE	DESCRIPTION	MFR	CATALOG SERIES NUMBER SEE NOTE 1	MOUNTING	VOLTS	LAMP			KEY NOTES
						WATTS	DELIVERED LUMENS	TYPE	
P1	4' LENSED STRIP	STARTEK	SP-4-SD-CA-ACW10	PENDANT 9'-6" AFF UNO	120	16.8	2086	LED ARRAY 4000K	
R1A	2X2 RECESSED LED HIGH-PERFORMANCE	T-1 LIGHTING	T1-PBLED-22	RECESSED	120	29	3770	LED ARRAY 4000K	
R1B	2X4 RECESSED LED HIGH-PERFORMANCE	T-1 LIGHTING	T1-PBLED-24	RECESSED	120	39	5070	LED ARRAY 4000K	
R2	RECESSED ADJUSTABLE DOWNLIGHT WITH 60 DEGREE SPECULAR REFLECTOR, WHITE TRIM AND WHITE BEZEL, 83 CRI	ALPHABET	NU6RA SERIES	RECESSED	120	25.9	1780	LED ARRAY 4000K	
R3	6" ROUND DOWNLIGHT, SPECULAR CLEAR 55 DEGREE REFLECTOR, CLEAR LENS, MATTE CHROME TRIM AND BEZEL, 83 CRI	ALPHABET LIGHTING	NU6-RD-XTM19	RECESSED	277	25.9	1730	LED ARRAY 4000K	
S1	1X4 LED WRAPAROUND	RENOVA	WBW-4-N-*-DM-*-AP-PP	CEILING SURFACE	120	22.17	3128	LED ARRAY 4000K	
S2	SURFACE WET LOCATION DOWNLIGHT	HALO	SLD4058*WH	CEILING SURFACE	120	12.2	800	LED ARRAY 4000K	
EBU	EXIT SIGN WITH INTEGRAL BATTERY BACKUP AND SELF-DIAGNOSTICS	SURE LITES	LPX7-SD SERIES	SEE NOTE	120	1	PER CODE	LED ARRAY	3
RH	2-HEAD EMERGENCY BATTERY LIGHTING UNIT WITH SELF DIAGNOSTICS	SURE LITES	SEL60R4SD	WALL 7'-0" AFF UNO	120/ 12	8.2	309	LED ARRAY	
RH	REMOTE EMERGENCY HEAD	SURE LITES	SRP25	WALL 8'-0" AFF UNO	12	2.5	90	LED ARRAY	5
W1	WALL PACK WITH INTEGRAL PHOTOCELL	LUMARK	XTOR03B-W-BZ-PC1	WALL 11'-0" AFG UNO	120	26	2710	LED ARRAY 4000K	
	NOTES								
1	NOTE THAT THESE NUMBERS ARE NOT COMPLETE CATALOG #'S. PROVIDE ALL REQUIREMENTS ON SCHEDULE, NOTES, SPECS, AND DRAWINGS COMBINED.								
2	CATALOG SERIES NUMBERS ARE USED TO ESTABLISH A LEVEL OF QUALITY AND NOT INTENDED TO LIMIT COMPETITION. SERIES NUMBERS ARE NOT COMPLETE CATALOG NUMBERS. COMPLY WITH ADDITIONAL REQUIREMENTS IN SPECIFICATIONS AND DRAWINGS.								
3	PROVIDE WALL, CEILING, OR PENDANT MOUNTING AS INDICATED ON PLANS. PROVIDE NUMBER OF FACES AND ARROWS AS INDICATED.								
4	VERIFY CEILING STRUCTURE AND MOUNTING HEIGHT PRIOR TO ORDERING ANY LIGHT FIXTURES.								
5	COLOR TO BE SELECTED BY ARCHITECT FROM MANUFACTURER'S STANDARD COLORS.								
6	PROVIDE ALL NECESSARY UNISTRUT MOUNTING HARDWARE FOR FIXTURES MOUNTED UNDER DUCTS. FIXTURES TO BE MOUNTED INDEPENDENTLY OF DUCTWORK.								
7	MOUNT VERTICALLY RECESSED IN WALL FROM FLOOR TO HEIGHT OF TOP OF DOOR FRAME.								

LIGHTING FIXTURE SCHEDULE- CHANGES TO SHEET
EL-501

CHINA MIDDLE SCHOOL GYM ADDITION

Scale:

Date: 04/22/19

Project No: 19006

CAD File:

SKE-02
ADDENDUM A

Allied Engineering
Structural Mechanical Electrical Commissioning



160 Veranda Street
Portland, Maine 04103
T: 207.221.2260
F: 207.221.2266
Web: www.allied-eng.com